

MODIFY YOUR TRASH CONTAINER TO RESIST BEARS



Black bears occur throughout New Hampshire. Residents may not be aware that black bears live nearby until a bear is attracted to a human-related food sources such as a trash container or bird feeder. If that occurs, an ongoing problem can be prevented by promptly securing trash containers and removing bird feeders and other potential food sources that may attract the bear. Unsecured and accessible garbage account for approximately 30% of annual bear-human conflicts in the state. Keeping black bears out of your trash is one of the best ways to prevent unnecessary bear conflicts around your home. Storing the trash container in a basement, garage or secure out-building is ideal for preventing access by bears. If there is not a secure location to store your trash, by using a few hand tools and some simple hardware, you can modify your trash container to make it bear-resistant. The hardware is relatively inexpensive and should be available at your local hardware or building supply store. You could also use other hardware and your own ideas to make your trash container bear-resistant.

Some towns in New Hampshire have wildlife ordinances that require garbage be stored in a wildlife-resistant container. Modifying your garbage container in this manner will ensure compliance with these ordinances. Please note that with an automated collection system you must remove the clips or carabineers prior to trash pickup. Contact your local waste collection service to find out if modification is allowed.

Modifying your container may not be enough to keep persistent bears from accessing your trash. Bears have a greater chance to gain access if the container can be tipped over. Use a ratchet strap device to secure the container to a tree or post until trash collection day.

Tools required include:

- Drill with 1/4" and 5/16" drill bits
- Wrenches: 7/16" and 1/2"
- Ratchet with 7/16" and 1/2" sockets
- Tape measure
- Black permanent marker

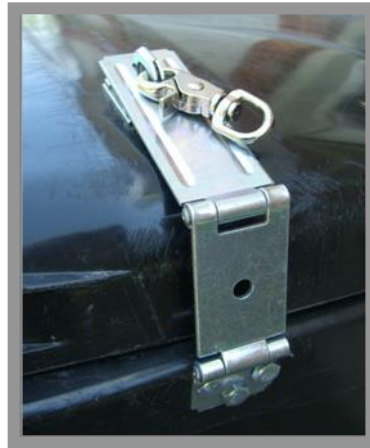
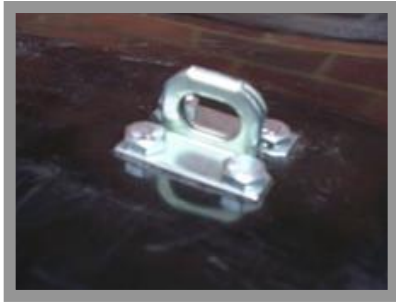
Materials Needed

Quantity	Item
3 or (5)	4½" Double Hinge Hasp (Wood screws in hasp package are not needed.)
3 or (5)	1/2" Trigger Snap Clip
1	U-bolt 1/4" x 1 1/8" x 2 1/4"
12 or (20)	1/4" x 3/4" Hex Bolts
6 or (12)	1/4" x 1 1/2" Hex Bolts
3	1/4" x 2" Hex Bolts
23 or (37)	1/4" Flat Washers
23 or (37)	1/4" Stop Nuts
Numbers in () are items needed in addition to numbers in black to increase security as found in optional step 6 below.	



Instructions

1. With the lid down, mark position of hinge hasp holes on each side of container body, approximately 9 inches from the front.
2. Drill one 1/4" hole and insert one 1 1/2" Hex Bolt (bolt length may vary with container style). Attach washer and Stop Nut, tighten slightly. Align hasp with marks and drill remaining holes. Insert bolts and attach washers/Stop Nuts. Tighten all bolts securely.
3. With the lid down again, fold the hinge(s) over the lid. Position the eye of the hasp under the hinge and mark the hole locations. Drill 1/4" holes in the marked spots. Insert four, 1/4" x 3/4" Hex Bolts through each hasp eye, secure with washer and Stop Nuts.



4. Attach Trigger Snap Clips or Carabineers to each hasp eye to secure lid. Mark location of front hasp and repeat process above, using 1/4" x 2" Hex Bolts.
5. On either side, 6 inches below the top, mark and drill holes for the U-bolt. Remove the nuts and plate, then screw the 1/4" nuts evenly 3/4" from the end of the U-bolt. Replace the plate and insert into U-bolt into the drilled holes. Attach washers and Stop Nuts and tighten. Use the U-bolt to store Trigger Snap Clips or Carabineers on day of trash pickup.



6. To increase trash container security, install two additional double hinge hasps, one on each side, 8 inches from the back.



To keep bears wild, what you do really matters. It starts with being aware and being BearWise. Please visit the BearWise website (<https://bearwise.org>) to learn more about bears, their behaviors, biology, and more ways to prevent conflicts.